

I Love Rock 'n' Roll

Joan Jett

Drum
Key

Bass Drum Snare Drum Hi-Hat Crash Cymbal

A diagram showing a four-line staff representing a drum set. The lines are labeled from bottom to top: Bass Drum, Snare Drum, Hi-Hat, and Crash Cymbal. A solid black dot is on the Bass Drum line, a solid black dot is on the Snare Drum line, an 'x' is on the Hi-Hat line, and an asterisk is on the Crash Cymbal line.

Drum Set

1 simile

The first drum set part is written on a five-line staff. It begins with a 4/4 time signature. The first measure contains a bass drum pattern. The second measure contains a snare drum pattern with accents (>) and a 'simile' marking. The third and fourth measures are repeat signs. The fifth measure is in 3/4 time with a snare drum pattern. The sixth measure is in 4/4 time with a snare drum pattern. The seventh and eighth measures are repeat signs.

2

The second drum set part is written on a five-line staff. It starts with a snare drum pattern in 4/4 time. The second, third, and fourth measures are repeat signs. The fifth measure is in 3/4 time with a snare drum pattern. The sixth measure is in 4/4 time with a snare drum pattern.

3

The third drum set part is written on a five-line staff. It starts with a snare drum pattern in 4/4 time. The second, third, and fourth measures are repeat signs. The fifth measure is in 3/4 time with a snare drum pattern. The sixth measure is in 4/4 time with a snare drum pattern.

4

The fourth drum set part is written on a five-line staff. It starts with a snare drum pattern in 4/4 time. The second, third, and fourth measures are repeat signs. The fifth measure is in 3/4 time with a snare drum pattern. The sixth measure is in 4/4 time with a snare drum pattern.

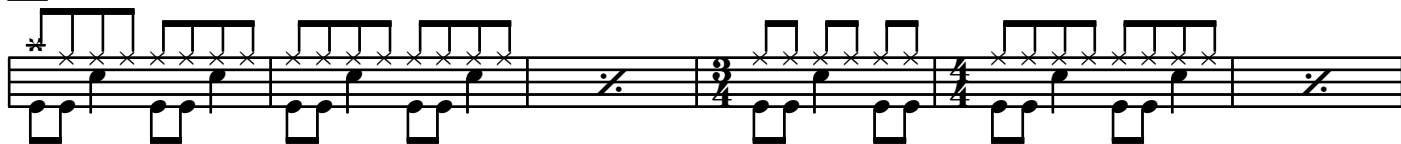
5

The fifth drum set part is written on a five-line staff. It starts with a snare drum pattern in 4/4 time. The second, third, and fourth measures are repeat signs. The fifth measure is in 3/4 time with a snare drum pattern. The sixth measure is in 4/4 time with a snare drum pattern.

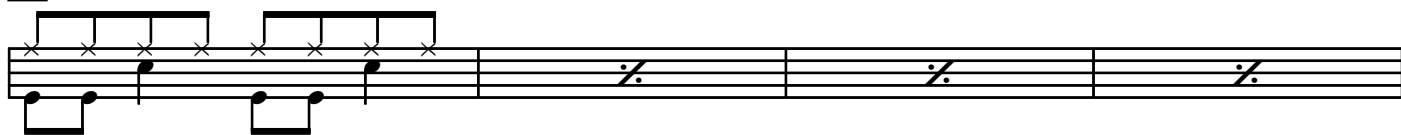
6

The sixth drum set part is written on a five-line staff. It starts with a snare drum pattern in 4/4 time. The second, third, and fourth measures are repeat signs. The fifth measure is in 3/4 time with a snare drum pattern. The sixth measure is in 4/4 time with a snare drum pattern.

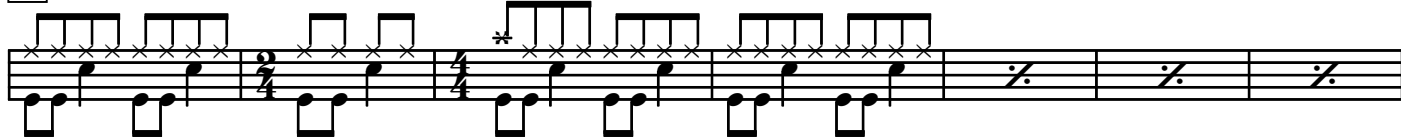
7



8



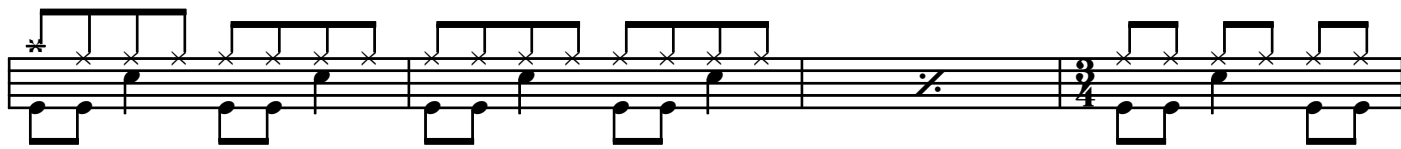
9



10



11



12



13



14

